

University of the
Arts London * *
Wimbledon * *
*

THE JERWOOD DRAWING PRIZE 2006

The **Jerwood Charitable Foundation** and **Wimbledon College of Art** announced the prize winners of **The Jerwood Drawing Prize 2006** at 7pm on **Tuesday 19th September 2006** at the opening of the exhibition at the **Jerwood Space, London**.

The **First Prize of £6000**, **Second Prize of £3000** and **two Student Prizes of £1000** have been chosen from a shortlist of 47 drawings by 43 artists selected by **Jason Brooks**, Artist, **Dr Yvonne Crossley**, Director of The Drawing Gallery, London, **Paul Thomas**, Artist and Co-founder of The Jerwood Drawing Prize.

The Jerwood Drawing Prize 2006 prizewinners are:

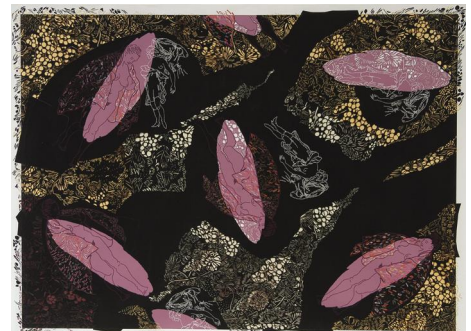
First Prize (£6,000):

Charlotte Hodes

Wallace Collection Series I 2005/06

2006

Digitally Manipulated Drawing, Inkjet with Collaged Fragments
104cm x 137cm



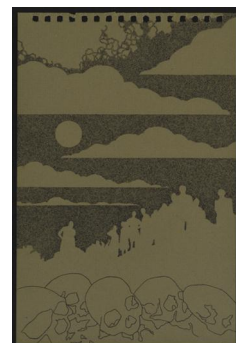
Second Prize (£3,000):

James McLellan

Crypto-Flux

2006

Pen on Paper
28cm x 23cm



(Page 1 of 4)

Student Prize (£1,000):

Zoë Anderson

Farmer Neal Cassidy was the Result of Masturbating Drunks

2006

Collage

40cm x 57cm

Zoë Anderson completed an MA Printmaking at the Royal College of Art, London in June 2006.



Student Prize (£1,000):

James Wright

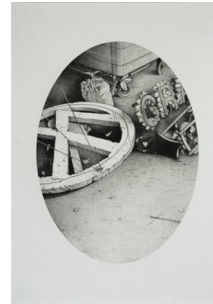
Treasured Memories

2006

Pencil on Paper

42cm x 32.5cm

James Wright is due to complete an MA Painting at the Royal College of Art, London in 2007.



Tim Eyles, Chairman of the Jerwood Charitable Foundation, Roanne Dods, Director of the Jerwood Charitable Foundation, Professor Roderick Bugg, Head of College, Wimbledon College of Art and Professor Anita Taylor, Director of The Jerwood Drawing Prize, will be joined at the opening of the exhibition by Marjorie Allthorpe-Guyton, Director of Visual Arts, Arts Council England, who will announce and present the awards at the Jerwood Space, London at 7pm on Tuesday 19th September 2006.

2,295 entries were submitted for consideration by the selection panel of The Jerwood Drawing Prize 2006 by artists resident or domiciled in the UK. The shortlist of 47 drawings includes work by 43 highly regarded, established artists as well as relative newcomers and students fresh from art school. The exhibition opens at the **Jerwood Space, London SE1 from 20th September to 22nd October 2006**. The exhibition will then tour in the UK, to galleries in Cheltenham, Birmingham, Bury St Edmunds, Durham and Cardiff.

Professor Anita Taylor comments: ***“A diverse and distinctive interpretation of drawing is represented in The Jerwood Drawing Prize 2006 - from the modesty of an artist’s notebook, the cleverly pitched graphic unfolding of a narrative, to the decorative collagist response to a museum collection, or a sophisticated animation borne out of a highly focused research project - the exhibition as a whole represents a visual feast for those interested in drawing and its extensive manifestations.”***

Selector, Paul Thomas commented: ***“From public to private, epic to modest, the selected drawings move in different ways through the world. Sometimes they brush past almost unnoticed, sometimes they tug at a sleeve, occasionally they shout; they each have a sense of insistence as they declare their intentions. As drawing becomes the ‘new black’, we must be careful to protect its inherent qualities as it is ever more pushed from a private to a public arena. In part, this show reflects that concern.”***

Roanne Dods, Director of the Jerwood Charitable Foundation, commented: ***“It is a great privilege for the Jerwood Charitable Foundation to be able to support and be associated with this prize which celebrates and demonstrates the quality and imagination of artists working within the discipline of drawing in the UK.”***

The full shortlist of 43 artists selected for The Jerwood Drawing Prize 2006 is as follows:

Zoë Anderson
Axel Antas
Charles Avery
Sharon Beavan
Birmingham & Robinson
Cath Campbell
Robert Clarke
Jane Dixon
Matthew Draper
Roy Eastland
Susan Eaton
Maryclare Foá
Josephine Gallagher
Mark Harris
Vincent Hawkins

Yao-Chih Ho
James Hobbs
Charlotte Hodes
Diane Howse
Amy Ison
Neil Kelly
Roger Kelly
Annie Kevans
Chie Konishi
David Leapman
Ralph Macartney
James Martelli
Mick Maslen
James McLellan

Ian McNamara
Zoë Mendelson
Max Naylor
Simon Parish
John Patterson
Lisa Peachey
Kerry Phippen
Julia Polonski
Benjamin Senior
Michael Shaw
Helen Sykes
Toby Wiggins
David Willcock
James Wright

A full colour catalogue is available to accompany the exhibition, illustrating work from all shortlisted artists, with introductory essays from Prof. Anita Taylor, Roanne Dods, Prof. Roderick Bugg, Dr Yvonne Crossley and Paul Thomas.

Images of all works and biographical details for the prizewinners and shortlisted artists are available on request from The Jerwood Drawing Prize Exhibition Administrators, Clare Mitten / Rose Heelas: +44 (0)20 8408 5533 / jerwood@wimbledon.ac.uk

Ends

Notes to Editors

1. **The Jerwood Drawing Prize** is the largest annual open exhibition for drawing in the UK and aims to promote and reward excellence and talent in contemporary drawing practice. It is organised by Wimbledon College of Art, under the direction of Professor Anita Taylor. The exhibition, initiated by the **Malvern Drawing Associates** in 1991, was established as the Cheltenham Open Drawing Exhibition by Anita Taylor and Paul Thomas, at the University of Gloucestershire, in 1994. The project relocated to **Wimbledon College of Art** in March 2003.
2. The **Jerwood Charitable Foundation** has been the principal benefactor since 2001. The project has grown considerably in stature and support since its inception and currently receives well over two thousand submissions on an annual basis. The **Jerwood Charitable Foundation** is dedicated to responsible and imaginative funding of the visual and performing arts and other areas of human endeavour and excellence. It supports, among other things, the *Jerwood Artists Platform*, *Jerwood Commissions* at the Wapping Project and the *Jerwood Sculpture Prize*.
3. **Wimbledon College of Art** became the sixth constituent college of the University of the Arts, London on 1st August 2006. It is one of the leading art schools in the UK and has a significant international reputation in Fine Art and Theatre, providing foundation, undergraduate, taught postgraduate and research opportunities for study in these subjects. Wimbledon College of Art has a strong tradition of research and all academic staff are active practitioners, researchers or scholars. As a result work by staff, in theatre and fine art, is frequently showcased in major galleries and theatres throughout the world. The Centre for Drawing at Wimbledon College of Art was established in 2000 and along with The Jerwood Drawing Prize represents the strong focus on drawing at the College.

Drawing Breath, is an exhibition originated to celebrate ten years of the annual open drawing exhibition and includes drawings by the artist-selectors from 1994-2006 and award winners from 1994-2005, for further information contact **the gallery at wimbledon college of art** on 020-8408-5057 or email gallery@wimbledon.ac.uk.

4. The **Jerwood Space** is a major initiative of the **Jerwood Foundation**. As well as providing excellent rehearsal facilities for young dance and theatre companies to develop their work at a greatly reduced cost, this beautifully refurbished Victorian school building houses a spectacular contemporary art Gallery. The Gallery is free to visitors and exhibits a year-round programme of work by young artists and photographers, including the prestigious awards and prizes supported by the **Jerwood Charitable Foundation**. Nearest Tube: Southwark (Jubilee line) or Borough (Northern Line). Open: 10am – 5pm Mon – Fri, 10am – 3pm Sat – Sun. 171 Union Street, London SE1 0LN - look for the white banners! T. 020 7654 0171 E. space@jerwoodspace.co.uk
5. **Exhibition Tour:** The Jerwood Drawing Prize 2006 will be shown at the following venues in 2006-2007:

Jerwood Space

171 Union Street, London SE1 0LN

20th September - 22nd October 2006

Pittville Gallery, University of Gloucestershire

Pittville Campus, Albert Road, Cheltenham GL52 3JG

27th October - 6th November 2006

mac

Cannon Hill Park, Birmingham B12 9HQ

11th November 2006 - 1st January 2007

Bury St Edmunds Art Gallery

The Market Cross, Bury St Edmunds, Suffolk IP33 1BT

12th January - 24th February 2007

DLI Museum & Durham Art Gallery

Aykley Heads, Durham DH1 5TU

10th March - 22nd April 2007

BayArt

54B/C Bute Street, Cardiff Bay, Cardiff CF10 5AF

13th June - 20th July 2007